



ADVANCED PHOTONICS

# DIGITAL RECORDER FOR NIGHT VISION SYSTEMS

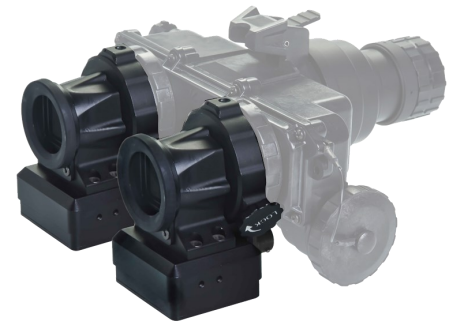
## NVR-714



The NVR-714 is the add-on plug-and-play system that attaches to the eyepiece of a night vision or daytime optical device and records the scene as viewed by an operator. It records what you see. An external display allows viewing the same image by two or more crew members. The NVR-714 is compatible with night vision monoculars, goggles, weapon sights as well as a wide variety of daytime optics.



Single View-Module  
Version: NVR-714-S



Dual View-Module  
Version: NVR-714-D



The NVR-714 kit consists of the View-Module and a portable high-resolution display unit with built-in recorder for taking photos and recording videos. Recorded materials are saved on a high-speed microSD card (included) and can be viewed at any time on the display for post-mission briefings.

### KEY FEATURES:

- > See-Through Optical Design
- > Video Output Port
- > High Quality Video and Audio Recording
- > Fits PVS-14 / PVS-7 Night Vision Systems
- > No Effect On NVD's Field-Of-View
- > Perfect Tool for Post-Mission Debriefings

### TECHNICAL SPECIFICATIONS

View-Module Camera	High-Definition: 720p @ 30FPS
View-Module Dimensions	58 x 78 x 62 mm
View-Module Weight	170 grams
Display Dimensions	131 x 86 x 18mm
Display Weight	210 grams
Effective Display Diagonal	5 Inches
Compatible GSCI Systems	PVS-14C, PVS-7, PVS-31C-MOD, PVS-14C-MOD, PVS-7-MOD



Designed, Developed, Manufactured by GENERAL STARLIGHT COMPANY INC.

120 WHITMORE ROAD, UNIT 20, WOODBRIDGE, ONTARIO, L4L6A5, CANADA

WWW.GSCI1.COM

GSCI@GSCI1.COM

+1.905.850.0990

DISCLAIMER: Technical description, certain optical-electronic-mechanical features of the product shown herein and/or some of its parts/components may not precisely represent the actual device and are subject to change without prior notice by the sole discretion of General Starlight Company, Inc. Mass of the product represents measurable weight of all components this product consists of, such as optics, mechanics and electronics. Weight of Image Intensifier tubes may vary depending on the type and make of Image Intensifier tube being used and therefore is listed separately. Dimensions of the product represents measurable size of the body, including all optical components attached and in fully folded position. Dimensions of additions such as mounting brackets, eyecups, objective lens covers, and/or battery extensions may vary and therefore are not listed herein. Copyright © 1992-2021 General Starlight Co., Inc. Canada. All rights reserved.